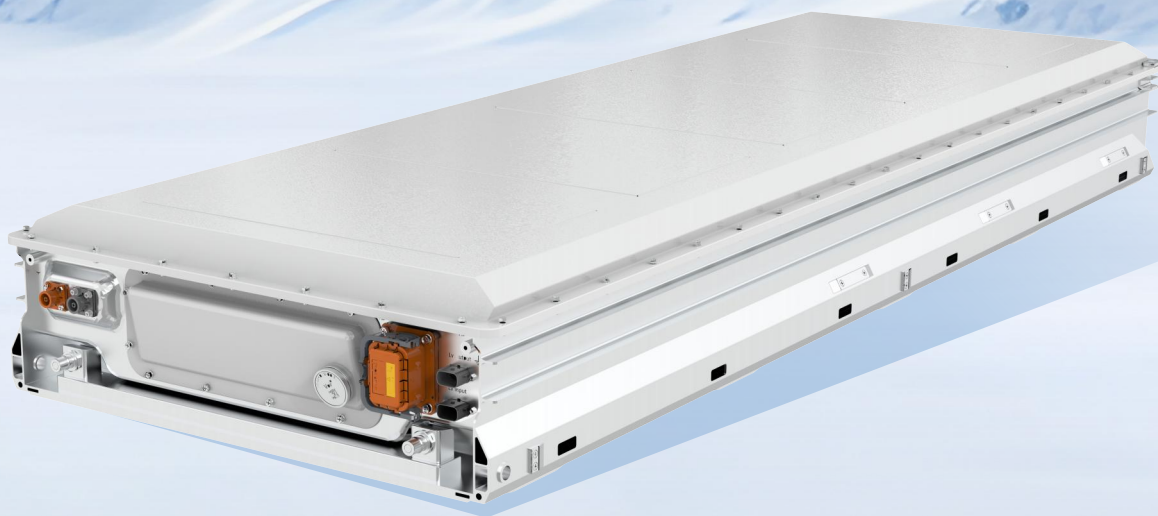


# Y104

## Energy storage battery module

---



**104.5KWh**

High Energy



**High safety**

Multi-factor safety  
matrix analysis and  
measures



**High convenience**

maintenance  
without coolant  
draining



**<3°C**

Intelligent  
Temperature control

## Datasheet

Item	Specifications	Remark
Product code	Y104	
Configuration	1P104S	
Rated energy	104.5kWh	
Rated voltage	332.8V	
Operating voltage range	260V-379.6V	For cell 2.5V-3.65V
Dimension	2150.5mm×779mm×250mm	
Mass	690kg	
Rated charge power	52.25kW	According to current map
Rated discharge power	52.25kW	According to current map
Short overload chargingcurrent	314A	60s
Short overload chargingcurrent	314A	60s
IP level	IP67	
Insulation standard	≥1000Ω/V	2500VDC
Withstand	No breakdown, No flashover	4500VDC
Discharge temperature	-30°C-55°C	
Charging temperature	0-55°C	
Thermal management type	Liquid cooling / heating	
Fire protection device	Aerosol	
Operating humidity	5%-90%RH	
Operating altitude	≤4000m	
Certification	Module:UL9540A, UN38.3, GB/T 36276-2023, RoHS, REACH String:UL9540A, UL1973, IEC62619, IEC63056, IEC62477-1, IEC60730-1, GB/T 36276-2023, RoHS, REACH	

## Product features

### High Safety

- IP67 high protection rating
- Grid-based thermal isolation to prevent heat spread
- Equipped with module-level fire detection and thermal runaway suppression measures
- Automatic detection of hazardous gas emissions, enabling early risk warning
- High mechanical strength, with resistance to harsh conditions such as drops, vibration, impact, and compression

### High Flexibility

- High volumetric energy density
- Compatible with mainstream market BMS
- Maintenance of key components without disassembly
- Utilizes self-sealing pipeline technology for maintenance-free liquid drainage
- Supports arrangement in mainstream commercial and industrial cabinets as well as standard 20-foot containers

### Long Cycle Life

- 20 years of maintenance-free operation
- Featuring a fully parallel flow channel design
- High-efficiency balancing capability
- Equipped with high-performance, long-lifespan "wending" battery cells

### Relevant Certification

