

**REPT
BATTERO**

TSINGSHA

LEADER IN BATTERY SOLUTIONS FOR ELECTRIC VEHICLES



COMPANY

INTRODUCTION

➤ Tsingshan Holding Group

Tsingshan Industry has invested in the new energy field by combining its rich mineral resources. Adhering to the mission of 'Refining a hundred years of stainless steel, building a green future', REPT BATTERO enjoys the unique resource integration ability and synergy advantage of the whole industrial chain conferred by Tsingshan Industry, and has become one of the fastest-growing battery producers in the industry.

NO.1

Global stainless steel crude steel production output

NO.1

Global nickel metal production output

NO.265

Fortune global 500 companies in 2024

185000+

Total employees in 2025

➤ Main Business

Supplying power battery systems and services for green transportation networks



Cells



Modules



Battery Packs

➤ REPT BATTERO

REPT BATTERO Energy Co., Ltd., founded in 2017, is the first new energy enterprise established by Tsingshan Holding Group, a Fortune Global 500 company. The company specializes in the research, development, production, and sales of lithium-ion batteries, providing solutions for new energy vehicle (NEV) power systems and smart energy storage. REPT BATTERO works hand in hand with customers to accelerate the global transition to green energy.

The company has established R&D centers in Shanghai, Wenzhou, and Jiaxing, and manufacturing bases in Wenzhou, Jiaxing, Liuzhou, Foshan, Chongqing, and Indonesia. By the end of 2024, the total production capacity reached 79 GWh, and is expected to exceed 90 GWh in 2025. In 2024, REPT BATTERO ranked 5th globally in energy storage cell shipments, 2nd globally in residential energy storage battery shipments, 6th domestically in lithium iron phosphate (LFP) power cell shipments, and 3rd in China in battery installations for new energy heavy-duty truck models.

BNEF Tier1

Bloombergnef tier 1 energy storage manufacturers

\$ 2.5 Billion

Sales revenue in 2024

NO.6

Domestic shipment volume of lithium iron phosphate (lfp) power cells in 2024

NO.3

2024 ranking of new energy heavy-duty truck models by installation volume

Supplying solutions and services for clean energy storage



Electrical Cabinet



Energy Storage Systems



Energy Storage Stations

➤ Manufacturing Plant



WENZHO, CHINA



LIUZHOU, CHINA



CHONGQING, CHINA



JIAXING, CHINA



FOSHAN, CHINA



MALUKU, INDONESIA

>> Passenger Vehicle Battery Product Matrix

BEV Series



Capacity	104Ah	136Ah	150Ah	171Ah
Rated voltage (V)	3.17V	3.16V	3.17V	3.17V
Energy density	177wh/kg	183wh/kg	170wh/kg	188wh/Kg
Size(mm)	52*148*115	50*194*112	54*173*145	60*194*112
Fast Charging 10%~80%	2.2C	4C	1.2C	1.5C
Weight	1.91±0.1kg	2.47 ± 0.2 kg	2.87±0.15kg	2.94 ± 0.2 kg

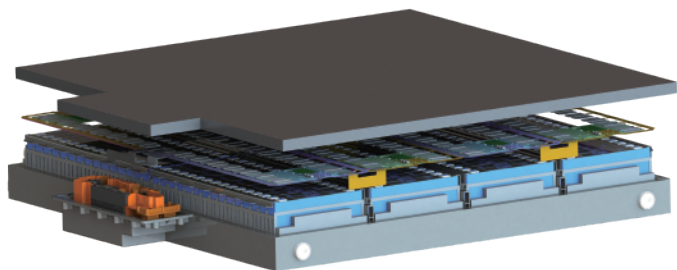
PHEV Series



Capacity	54Ah	54Ah	65Ah	79Ah	87Ah
Rated voltage (V)	3.17V	3.17V	3.17V	3.17V	3.17V
Energy density	158wh/kg	160wh/kg	170Wh/kg	172.6wh/kg	168wh/kg
Size(mm)	29*148*112	30*194*87	34*183*92	52*148*95	52*148*103
Fast Charging 10%~80%	2.2C	2.2C	1.2C	2.2C	2.2C
Weight	1.082± 0.03kg	1.07 ± 0.02kg	1.253±0.013Kg	1.52 ± 0.02 kg	1.64±0.02kg

Passenger Vehicle Battery Pack Product Matrix

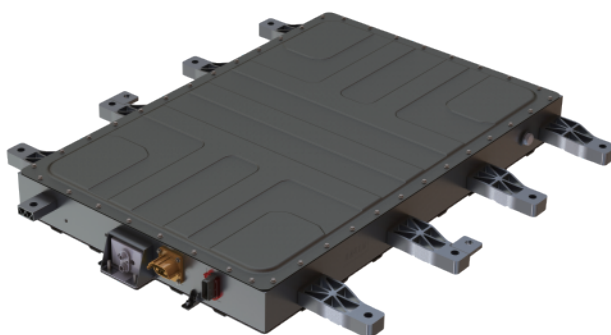
Green CTP PACK



Project	Parameter
Battery Type	LFP
Pack Energy (kWh)	10
Pack Dimension(mm)	1098*716*120
Operating Voltage Range (V)	240-438
Nominal Voltage (V)	380.4
Charging Time (min@10-80%SOC)	34
Peak Charging Power (KW)	66kW@10s
Peak Discharging Power (KW)	133kW@10s
Thermal Management	Direct cooling and film heating
IP Level	IP67 & IPX9K
Connection Mode	Quick plug
Communication Mode	CAN
Operating temperature (°C)	-30-55
Cell Capacity(Ah)	28
Cell Nominal Voltage (V)	3.17
Cell Energy Density (Wh/kg)	140
Cell Dimension (mm)	26.5*148*85
Application Field	PHEV

Project	Parameter
Battery Type	LFP
Pack Energy (kWh)	67.62@1/3C
Pack Dimension(mm)	1380.36*1347.76*146.41
Operating Voltage Range (V)	300-438
Nominal Voltage (V)	386.4@1/3C
Charging Time (min@10-80%SOC)	16
Peak Charging Power (KW)	192@25°C, 10s.SOC50%
Peak Discharging Power (KW)	468@25°C,10s. SOC50%
Thermal Management	Liquid cooling
IP Level	IP68
Connection Mode	Quick plug
Communication Mode	CAN
Operating temperature (°C)	-30-60
Cell Capacity(Ah)	175@1/3C
Cell Nominal Voltage (V)	3.22@1/3C
Cell Energy Density (Wh/kg)	185@1/3C
Cell Dimension (mm)	40300112
Application Field	BEV

Fuel-saving PACK



Collaborative Brands



东风日产



smart



STELLANTIS



DONGFENG



MAXUS



一汽奔腾
BESTUNE



LEAPMOTOR



NETA



TATA



CITROËN



eG-NEV



FIAT



OPEL



WULING



The Innovation Group



KION
GROUP



VAUXHALL



Keestrack



BAOHUN






ROEWE

Application Models



ESG Management

-  Supply Chain Traceability Management 01
-  Energy Utilization 02
-  Battery Recycling 03
-  Waste Emissions and Utilization 04
-  Employee Production Safety and Health 05
-  Corporate Social Responsibility System 06

ESG

ESG Achievements

- "Participating Companies in the United Nations Global Compact (UNGC) 'SDG Ambition Accelerator'"
- Responsible Business Alliance (RBA) Silver Level Certification
- GB/T 39604-2020 Corporate Social Responsibility Management System Certification
- 2024 Greenlight ESG List Exemplary Case - Exemplary Innovation Contribution List TOP10
- The "2024 Annual Innovation Award - Energy Conservation and Emission Reduction Technology Progress Award" and the "Carbon Neutrality Field Technology Progress Award" issued by the China Energy Conservation Association and the China Quality Certification Center.

-  Liuzhou Base was awarded Guangxi Zhuang Autonomous Region GreenFactory
-  Liuzhou Base was awarded Guangxi Intelligent Demonstration Manufacturing Enterprise
-  Jiaxing Base was awarded Jiaxing city Green Factory
-  Wenzhou Base and Liuzhou Base were awarded National-level Green Factory

We will establish a development system aligned with the United Nations Sustainable Development Goals, creating a safe and healthy workplace for all employees and a green, eco-friendly community environment to ensure sustainable and rapid growth.

Global Industrial Layout

■ Annual production of 30,000 tons of battery-grade cobalt sulfate

■ Annual production of 20,000 tons of AG artificial graphite

■ > 9 million tons of nickel metal reserves

■ Resource integration and synergy



■ CHINA

■ AFRICA

■ INDONESIA

■ GERMANY

■ AMERICA

● Planned Production Capacity For 2025

「90GWh+」

● R&D Center

「Jiaxing | Shanghai
Wenzhou」

● Production Base

「Wenzhou | Jiaxing | Liuzhou
Foshan | Chongqing | Indonesia」

● Indonesia Base

「Under Construction」

REPT BATTERO Energy Co.,Ltd.



R&D Center

Jiaxing Wenzhou Shanghai, China
Email:market@reptbattero.com



Production Base

Wenzhou Jiaxing Liuzhou Foshan Chongqing, China
Indonesia
Email:market@reptbattero.com



American Subsidiary

REPT Battero American Corporation
Address:California USA
Email:info.us@reptbattero.com



German Subsidiary

REPT Battero Energy Germany GmbH
Address:Munichen Germany Subsidiary
Email:market@reptbattero.com



Indonesia base

Address:Maluku Indonesia
Email:market@reptbattero.com



LinkedIn

STOCK CODE

0666.HK